

A CONTRIBUTION TO THE KNOWLEDGE OF THE NEUROPTEROUS
INSECTS OF ALGERIA.

By R. F. LONGINUS NAVAS, S.I.

THE following list is the result of the study of a small collection of Neuroptera collected in the year 1913 by Lord Rothschild and Dr. Ernst Hartert, and in the year 1914 by the same Dr. Hartert and his assistant, Mr. Carl Hilgert. All the species are interesting and worthy of mention, at least for the localities. All the specimens are in my collection, presented to me by Dr. Hartert, to whom I offer here my warmest thanks.

FAMILY MYRMELEONIDAE.

TRIBE *Myrmeleonini* Banks.

1. *Morter alternans* Brull. var. *fasciata* Nav. Aïn Sefra, South Oran, May 1-18, 1913 (W. R. et E. H.); Oued Nça, M'zab country, April 16-30, 1914 (E. H. et C. H.)

2. *Loperus fedschenkoi* MacLachl. El Alia, between Touggourt and Guerrara, April 12, 1914 (E. H. et C. H.); Oued Nça, M'zab country, April 16-30, 1914 (E. H. et C. H.); Aïn Sefra, South Oran, May 1-18, 1913 (W. R. et E. H.).

TRIBE *Pignatellini* Nav.

3. *Mesonemurus* gen. nov.

Similis *Macronemuro* Latr.

Caput antennis fortibus, thorace brevioribus, elava forti, insertione haud latius diametro primi articuli distantibus.

Abdomen cylindricum, in ♀ alis brevius, in ♂ alis multo longius, tertio segmento leviter inflato; cercis cylindricis, octavo abdominis segmento multo brevioribus.

Pedes fortes; calcaribus primo tarsorum articulo longioribus; tarsis articulo primo vix longiore secundo, 2-4 brevibus, subaequalibus, quinto praecedentibus simul sumptis longitudine subaequali.

Alae angustae; angulo cubiti aperto; area apicali paucis vel nullis venulis gradatis instructa.

Ala anterior linea plicata anteriore et posteriore indicatis.

Ala posterior area radialis 2 venulis internis, linea plicata anteriore indicata; ♂ nulla pilula axillari.

A *Macronemuro* differt praecipue brevitate cercorum in ♂ et primi articuli tarsorum, numero venularum radialium internarum in ala posteriore et praesentia lineae plicatae in eadem ala.

The type of the new genus is the following species.

4. *Mesonemurus harterti* sp. nov. (fig. 1).

Caput (fig. 1, *a*) fulvum; fascia inter antennas, alia transversa in vertice, duobus punctis in occipite et stria media longitudinali, interdum interrupta (♂), nigris; oculis fuscis; palpis fulvis, ultimo articulo labialium externe macula nigra notato; antennis thoracae brevioribus, elava forti, fulvis, fusco annulatis.

Prothorax (fig. 1, *a*) paulo longior quam latior (♀), vel subaeque longus ac latus (♂), fulvo-testaceus, pilis lateralibus fulvis; superne fascia bina longitudi-

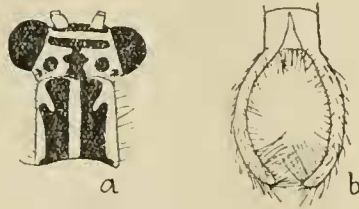


FIG. 1.—*Mesonemurus harterti* Nav.

a. Head and prothorax. *b.* End of abdomen. (In Coll. Navas.)

nali, ad sulcum transversum externe angulate emarginata, fusca. Meso- et metathorax subtoti fusci, striis longitudinalibus parum completis fulvo-testaceis.

Abdomen subtotum fuscum, striis dorsalibus brevibus vel obsoletis testaceis; cinereo dense pilosum, in ♂ segmentis 2-4 densius longiusque; in ♀ alis brevius, in ♂ eisdem longius; cercis ♂ (fig. 1, *b*) cylindricis, arcuatis, fulvis, nigro longiter pilosis, ultimo segmento abdominis longioribus; lamina subgenitali ♂ longa, acuta, longiter pilosa.

Pedes fortes, fulvi, dense fusco punctati; fusco dense longiterque setosi; albido pilosi; femoribus superne subtotis fuscis; calcaribus testaceis, anterioribus duos primos, posterioribus primum tarsorum articulum superantibus; tarsorum articulis apice nigris.

Alae angustae, hyalinae, subacutae; area apicali paucis venulis gradatis; reticulatione plerumque fusca, fulvo varia, cubito subtoto fusco; stigmatibus fulvo, interne puncto fusco limitato.

Ala anterior 6 venulis radialibus internis; sectore radii 6 ramis; duabus striis obliquis fuscis, rheimali seu externa longiore et distinctiore, cubitali brevioribus; cubito partim anguste fusco marginato.

Ala posterior nullis venulis limbatis; duabus venulis radialibus internis, interdum tribus; sectore radii 5-6 ramis; procubito subtoto fulvo; cubito a basi usque ad divisionem et ulterius in ramo anteriore, toto fusco.

	♂	♀
Long. corp.	38 mm.	24 mm.
Long. al. ant.	23 „	23.5 „
Long. al. post.	20.5 „	21 „
Long. eere.	3 „	„

From the Oued Nça, M'zab country, April 16-30, 1914 (E. H. et C. H.).

5. *Macronemurus platycercus* sp. nov. (fig. 2).

Etym. From Gr. πλατύς *large* and κέρκος *tail*; allusion to the relative shortness and width of the cerci of ♂.

Fulvus, fulvo-ferrugineo mistus.

Caput (fig. 2, a) facie, palpis et duobus primis articulis antennarum flavis; vertice plaga lata, occipite linea transversa, fuscis; palporum labialium ultimo articulo fusiformi elongato, acuto, externe fusco notato; antennis ferrugineis, vix fulvo annulatis.

Thorax flavus, fusco longitudinaliter striatus. Prothorax (fig. 2, a) paulo latior quam longior, antrorsum leviter angustatus; disco linea media longitudinali pone sulcum, punctis ante sulcum et stria obliqua utrimque prope marginem



FIG. 2.—*Macronemurus platycercus* ♂ Nav.

a. Head and prothorax. b. End of abdomen, from side. (In Coll. Navás.)

posteriorem, fuscis. Pili laterales albi. Meso- et metanotum tribus striis longitudinalibus fuscis, interruptis, media in duas tresve divisa.

Abdomen fulvum, pallido breviter pilosum; inferne fusco-ferrugineum; superne linea media longitudinali fusco-ferruginea; cercis ♂ fuscis fuscoque pilosis (fig. 2, b), latitudine abdominis paulo longioribus, sublaminaribus, arcuatis.

Pedes flavo-fulvi, fusco setosi; apice tibiatarum et articularum tarsorum fusco; calcaribus testaceis, modice arcuatis, duos primos tarsorum articulos aequantibus aut superantibus.

Alae hyalinae, irideae, acutae; margine externo sub apicem leviter concavo; stigmate pallido, vix sensibili; reticulatione fulvo-pallida, ad venularum insertionem fusco punctata; area apicali serie venularum gradatarum instructa. Pili fusci, densiusculi, tenues.

Ala anterior 7 venulis radialibus internis; sectore radii 8-9 ramis.

Ala posterior una venula radiali interna; sectore radii 9-10 ramis.

Long. corp. ♂	28	mm.
Long. al. ant.	22	„
Long. al. post.	20.6	„

From Hammam R'irha, North Algeria, May 30, 1913 (W. R. et E. H.).

TRIBE *Neuroleini* Nav.

6. *Neuroleon algericus* Nav., *Bull. Soc. Hist. Nat. Nord Afrique*, 1913, p. 216, f. 3.

From the Oued Nça, M'zab country, April 16-30, 1914 (E. H. et C. H.); Aïn Sefra, South Oran, May 1-18, 1913 (W. R. et E. H.).

The type in the Vienna Museum being incomplete and the slender shape

of the wings very remarkable, I give here the measurements of the specimens. Length, 21 mm.; breadth of the frontwing at the pterostigma, 3.5 mm.; of the hindwing at the same place, 2.9 mm.

TRIBE *Megistopini* Nav.

7. *Megistopus flavicorvis* Ross.

From Hammam R'irha, May 30, 1913 (W. R. et E. H.). A Mediterranean species, to my knowledge not previously recorded from Algeria.

TRIBE *Gymnoleini* Nav.

8. *Maracanda stigmalis* Nav.

Oued Nça, M'zab country, April 16-30, 1914 (E. H. and C. H.).

TRIBE *Creoleini* Till.

9. *Creoleon aegyptiacus* Rambur.

From Aïn Sefra, South Oran, May 1-18, 1913 (W. R. and E. H.).

10. *Mauroleo* gen. nov.

SIMILIS *Creoleoni* Till.

Caput antennis longis, fere thorace longioribus; clava haud forti; insertione minus latitudine primi articuli distantibus.

Abdomen alis brevius (saltem in ♀).

Pedes mediocres; tibiis anterioribus brevioribus suis femoribus; calcaribus fere tres primos tarsorum articulos longitudine aequantibus; tarsorum articulo 1 brevi, 2-4 brevioribus, inter se aequalibus, 5 longo, praecedentibus simul sumptis subaequali.

Alae ad medium leviter dilatatae, manifeste longitudine inaequales, posteriore brevior; margine externo convexo; area apicali lata, serie venularum gradatarum instructa; linea plicata nulla.

Ala anterior sectore radii ultra divisionem cubiti orto; ramis cubiti inter se et cum margine posteriore parallelis; postcubito longo, margini posteriori cubiti parallelo et cum eo anastomosi obliqua conjuncto.

This genus differs from the genus *Creoleon* Till. (= *Creagris* Hag., nom praecoc.) by the form of the wings, which are broader, less acute, with the exterior margin convex, not emarginated, the hindwing plainly shorter than the frontwing, etc.

The type is the next species.

11. *Mauroleo turbidus* sp. nov.

Fulvus, fusco maculatus.

Caput facie straminea; vertice et occipite ferrugineo dense maculatis; oculis fuscis; palpis flavis, ultimo articulo labialium inflato, externe puncto fusco notato; antennis fuscis, fulvo anguste annulatis; duobus primis articulis flavis, superne stria fusca transversa signatis.

Prothorax paulo latior quam longior, superne bina stria longitudinali media

ferruginea; alia ad margines laterales pone sulcum transversum fusco-nigra. Meso- et metathorax abunde vageque fusco notati.

Abdomen fulvum, albido breviter pilosum; aliquot segmentis ad marginem posticum fusciscentibus; pilis spinulisve valvarum ♀ nigris.

Pedes fulvi, parce fusco punctati; apice tibia rum et articulorum tarsorum fusco-ferrugineo; albo pilosi; nigro longiterque setosi; calcaribus testaceis, parum curvatis, anterioribus tres primos, posterioribus duos primos tarsorum articulos superantibus.

Alae hyalinae, irideae, apice subacutae, ad tertium apicale leviter dilatatae; stigmatibus albo-flavido, anteriore majore distinctioreque; reticulatione fulvo-pallida, fusco striata; costa pallida.

Ala anterior area radialis 5-6 venulis internis; sectore radii 7-8 ramis; area cubitali simplice, angusta, ultima areola ad anastomosim divisa; area post-cubitali simplice, angusta; venis fusco striatis; venulis fuscis pallidisque, gradatis apicalibus fuscis; paucissimis ferrugineo vix sensibilibus limbatis.

Ala posterior brevior acutiorque; una venula radialis interna; sectore radii 8 ramis; area cubitali interna angusta, simplice, externa latiore, partim triareolata. Venae striatae, sed proclivitas totus et pleraeque venulae pallidae.

Long. corp. ♀	25 mm.
Long. al. ant.	25.2 „
Long. al. post.	22.8 „

From the Oued Nça, M'zab country, April 16-30, 1914 (E. H. and C. H.).

FAMILY CHRYSOPIDAE.

TRIBE *Chrysopini* Nav.

12. *Chrysopa vulgaris* Sehn.

Hammam R'irha, May 30, 1913 (W. R. and E. H.).

13. *Chrysopa vulgaris* Sehn. var. *aequata* Nav.

Hammam R'irha, June 1, 1913 (W. R. and E. H.).

14. *Chrysopa flavifrons* Brau. var. *nigropunctata* Ed. Pict.

Hammam R'irha, May 30, 1913 (W. R. and E. H.).

15. *Chrysopa euprepia* Nav., *Bull. Soc. Entom. Suisse*, 1916, xii. p. 361, pl. xxiv. f. 4.

Oued Nça, M'zab country, April 10-30, 1914 (E. H. and C. H.). New for Algeria; the type is from Tozeur, Tunisia.

16. *Chrysopa pilosella* Nav.

Hassi Dinar, south of Touggourt, April 12, 1914 (E. H. and C. H.), Oued Nça, M'zab country, April 16-30, 1914 (E. H. and C. H.)

17. *Chrysopa genei* Ramb.

Hammam R'irha, May 30, 1913 (W. R. and C. H.).

18. *Chrysopa venosa* Ramb.

Oued Nça, April 16-30, 1914 (E. H. and C. H.).

19. *Cintameva formosa* Brau.

Hammam R'irha, May 30, 1913 (W. R. and E. H.). Already recorded from Algeria by MacLachlan.

20. *Minva* gen. nov.

Genus Chrysopiniorum.

Labrum antice truncatum. Antennae graciles, alis haud longiores.

Prothorax transversus.

Abdomen ♀ in ovipositorem acutum productum.

Pedes graciles; unguibus arcuatis, basi haud fortiter dilatatis.

Alae angustae; stigmatate sensibili, in utraque area, costali et subcostali venulis instructo; area procubitali haud angusta.

Ala anterior area costali haud fortiter dilatata; cubito prope basim incrassato de more; cellula tertia procubitali indivisa, seu sine venula divisoria; venulis gradatis in duas series dispositis.

Ala posterior postcubito seu ramo instructo; venulis gradatis una serie, externa.

The type is the next species.

21. *Minva punctata* sp. nov. (fig. 3).

Viridis.

Caput viridi-flavum; puncto nigro in media fronte, paulo ante antennis duobus in vertice, duobus in occipite; antennis articulo primo viridi, puncto nigro dorsali prope apicem internum; secundo articulo nigro, transverso; ceteris fuscis, basim versus fulvescentibus.

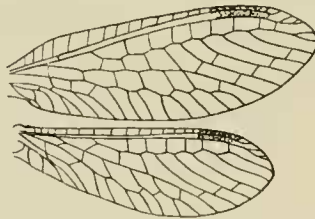


FIG. 3.—*Minva punctata* Nav., Wings.
(In Coll. Navàs.)

Prothorax fortiter transversus; pilis nigris; margine antico late rotundato; lateralibus parallelis; sulco transverso in tertio posteriore sito; striola fusca obliqua utrimque pone sulcum, prope margines laterales.

Abdomen viride, viridi pilosum; ovipositore ♀ acuto, basi breviter crassiore, subuliformi.

Pedes teretes, virides, nigro pilosi; femoribus pallidioribus; unguibus fuscis.

Alae (fig. 3) hyalinae, irideae, angustae, apice subacutae; reticulatione viridi; pilis fimbriisque brevibus, fuscis; stigmatibus elongato, viridi-flavo.

Ala anterior venulis gradatis fere 2-4; sectore cubiti furcato; postcubito simplice.

Ala posterior venulis gradatis 3; una venula postcubitali.

Long. corp. ♀	6.5 mm.
Long. al. ant.	10 "
Long. al. post.	9.4 "

From Aïn Sefra, South Oran, May 1-18, 1913 (W. R. and C. H.).

TRIBE *Nothochrysinini* Nav.

22. *Rexa* gen. nov.

GENUS *Nothochrisinorum*.

Caput labro antice emarginato, lobis rotundatis; antennis haud alis longioribus.

Abdomen cylindricum, alis brevius.

Pedes teretes; tibia posteriore haud compressa neve sulcata; unguibus basi fortiter dilatatis.

Alae latae; stigmatibus elongato, in area costali venulis destituto; venulis gradatis discalibus saltem in tres series dispositis.

Ala anterior cellula tertia procubitali in duas areolas, venula procubito et cubito subparallela, divisa; vena cubitali prope basim de more incrassata.

The type is the following species.

23. *Rexa lordina* sp. nov. (fig. 4).

Viridis.

Caput flavum, rubro tinctum; oculis in sicco fuscis; labro antice leviter emarginato, lobis lateralibus rotundatis, parum prominentibus; palpis fuscis, ad articulationes pallidis.

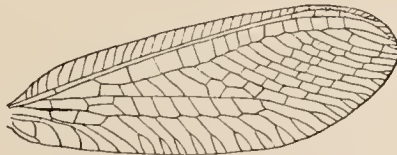


FIG. 4.—*Rexa lordina* ♀ Nav. Frontwing.
(In Coll. Navás.)

Thorax superne fascia media longitudinali flava. Prothorax latior quam longior, antrorsum leviter angustatus.

Abdomen viride, viridi pilosum.

Pedes virides, fusco pilosi; apice femorum, tibiaram, tarsisque totis flavis.

Alae latae, apice elliptice rotundatae; hyalinae, irideae; reticulatione viridi; stigmatе viridi pallido, parum sensibili.

Ala anterior (fig. 4) disco reticulato, venulis gradatis fere in quatuor series dispositis; ramis venulisque marginalibus fere furcatis; aliquot venulis prope basim fuscatis.

Ala posterior venulis costalibus et initio sectoris radii fuscato; venulis gradatis in tres series dispositis, media serie paucis venulis, extremis 9-10.

Long. corp. ♀	10 mm.
Long. al. ant.	13·5 „
Long. al. post.	12·2 „

From Hammam R'irha, May 30, 1913 (W. R. and E. H.).
